



OTOMOTİV SANAYİİ DERNEĐİ  
AUTOMOTIVE MANUFACTURERS ASSOCIATION

# Otomotiv Sanayii Genel ve İstatistik Bülteni General and Statistical Information Bulletin Of Automotive Manufacturers 2013 - I

OSD "OICA" Üyesidir



OSD is a Member of "OICA"

**İÇİNDEKİLER****SAHİFE**

OTOMOTİV SANAYİİ FİRMALARI HAKKINDA GENEL BİLGİLER - 2013	1
OTOMOTİV SANAYİİ FİRMALARININ ÜRETTİKLERİ MODELLER VE GENEL SPESİFİKASYONLARI - 2013	2 - 12
OTOMOTİV SANAYİİ FİRMALARININ 2013 YILI ÜRETİM KAPASİTELERİ	13
YILLARA GÖRE ÜRETİM GRAFİKLERİ	14 - 15
OTOMOTİV SANAYİİ FİRMALARININ ÜRETİM ADETLERİ	16
KAPASİTE KULLANIM VE İHRACAT GRAFİKLERİ	17
YILLAR İTİBARIYLA ÜRETİM ADETLERİ VE KAPASİTE KULLANIMLARI	18
OTOMOTİV SANAYİİ FİRMALARININ İHRACATLARI	19
OTOMOBİL İTHALATI – HAFİF TİCARİ ARAÇ İTHALATI	20
OTOMOBİL VE HAFİF TİCARİ ARAÇLAR/ÜRETİM/İTHALAT/İHRACAT GRAFİKLERİ	21
OTOMOTİV SANAYİİ İSTİHDAMI	22 - 25
OTOMOTİV SANAYİİ YATIRIMLARI	26
TÜRKİYE ARAÇ PARKI	27

**CONTENTS****PAGE**

GENERAL INFORMATION ON THE AUTOMOTIVE MANUFACTURERS - 2013	1
GENERAL SPECIFICATIONS OF THE PRODUCTS - 2013	2 - 12
PRODUCTION CAPACITIES - 2013	13
PRODUCTION BY YEARS IN GRAPHICS	14 - 15
THE PRODUCTION UNITS OF THE AUTOMOTIVE MANUFACTURERS	16
CAPACITY USAGE AND EXPORTS IN GRAPHICS	17
PRODUCTION UNITS AND CAPACITY UTILIZATION BY YEARS	18
AUTOMOTIVE INDUSTRY EXPORTS	19
P. CAR IMPORTS - LIGHT COMMERCIAL VEHICLE IMPORTS	20
P. CARS AND LIGHT COMMERCIAL VEHICLES/PRODUCTION/IMPORTS/EXPORTS	21
AUTOMOTIVE INDUSTRY EMPLOYMENT	22 - 25
AUTOMOTIVE INDUSTRY INVESTMENTS	26
AUTOMOTIVE VEHICLES PARK IN TURKEY	27

**OTOMOTİV SANAYİİ FİRMALARI HAKKINDA GENEL BİLGİLER - 2013**  
**General Information On The Automotive Manufacturers - 2013**

OCAK SONU/By the end of January

FİRMALAR Firms	ÜRETİM YERİ The Production Place	ÜRETİME BAŞLAMA TARİHİ Starting Year Of Production	LİSANS Licence	SERMAYE Capital (1000 YTL)	YABANCI SERMAYE Foreign Cap. (%)	KAPALI ALAN Covered Area (1.000 M2)	TOPLAM ALAN Total Area (1.000 M2)
A.I.O.S.	KOCAELİ	1966	ISUZU	25.419	29,74	82	299
B.M.C.	İZMİR	1966		500.000	0	123	826
FORD OTOSAN	ESKİŞEHİR KOCAELİ	1983 2001	FORD	350.910	41	77 345	1.105 1.528
HATTAT TARIM	TEKİRDAĞ	2002	VALTRA, UNIVERSAL, HATTAT	40.000	0	41	172
HONDA TÜRKİYE	KOCAELİ	1997	HONDA MOTOR EUROPE. LTD.	180.000	100	77	292
HYUNDAI ASSAN	KOCAELİ	1997	HYUNDAI MOTOR COMP.	627.235	70	123	687
KARSAN	BURSA	1966	KARSAN / PEUGEOT HYUNDAI MOTOR COMPANY RENAULT TRUCKS BREDA MENARINI BUS	260.000	0	110	230
M.A.N. TÜRKİYE	ANKARA	1966	MAN TRUCK & BUS AG	65.000	99,9	111	317
M.BENZ TÜRK	İSTANBUL AKSARAY	1968 1985	MERCEDES BENZ	275.000	84,99	198 107	511 558
OTOKAR	SAKARYA	1963	LAND ROVER / FRUEHAUF	24.000	0	141	552
O.RENAULT	BURSA	1971	RENAULT	323.300	51	295	510
TEMSA GLOBAL	ADANA SAKARYA	1987 2008	TEMSA / MITSUBISHI FUSO TRUCK & BUS CORP.	210.000	0	105 32	555 131
TOFAŞ	BURSA	1971	FIAT	500.000	37,8	399	934
TOYOTA	SAKARYA	1994	TOYOTA	150.165	100	212	917
T.TRAKTÖR	ANKARA	1954		53.369	37,5	82	257
<b>TOPLAM/Total</b>				<b>3.584.398</b>		<b>2.660</b>	<b>10.381</b>

**OTOMOTİV SANAYİ FİRMALARININ ÜRETİKLERİ MODELLER VE GENEL SPESİFİKASYONLARI - 2013**  
General Specifications Of The Products - 2013

OCAK SONU/By the end of January

FİRMALAR/MODELLER - Firms/Models	MOTOR / Engine							ŞANZİMAN/Gear Box		
	A.Y.A. G.V.W. K.G.	NET AG. Net We. K.G.	CİNSİ Type	SİLİNDİR ADEĐİ No.Of Cylinder	CC cc	GÜCÜ/Power BHP/DEVİR Hp/Rpm	VİTES Gear	MODEL	LASTİK EBADI / Tire Size	
<b>A.ISUZU</b>										
KAMYONET NLR85 FFL KISA	Truck	3500	1995	DİZEL	4	2999	150/2800	5/1	MYT 5T	ÖN-ARKA 195/75R16C
KAMYONET NLR85 FFL UZUN	Truck	3500	2065	DİZEL	4	2999	150/2800	5/1	MYT 5T	ÖN-ARKA 195/75R16C
KAMYONET NNR85 KISA	Truck	3500	2175	DİZEL	4	2999	150/2800	5/1	MYT 5T	ÖN-ARKA 215/75R17,5
KAMYONET NNR85 UZUN	Truck	3500	2205	DİZEL	4	2999	150/2800	5/1	MYT 5T	ÖN-ARKA 215/75R17,5
KAMYON NPR75 KISA	Truck	8000	2685	DİZEL	4	5193	155/2600	6/1	MYT 6S	ÖN-ARKA 215/75R17,5
KAMYON NPR75 UZUN	Truck	8000	2790	DİZEL	4	5193	155/2600	6/1	MYT 6S	ÖN-ARKA 215/75R17,5
KAMYON NPR10 KISA	Truck	9800	2920	DİZEL	4	5193	155/2600	6/1	MYT 6S	ÖN-ARKA 215/75R17,5
KAMYON NPR10 UZUN	Truck	9800	2960	DİZEL	4	5193	155/2600	6/1	MYT 6S	ÖN-ARKA 215/75R17,5
KAMYON NPR3D	Truck	12500	3540	DİZEL	4	5193	190/2600	6/1	MZZ 6F	ÖN-ARKA 215/75R17,5
MİDİBÜS TURKUJAZ	Midibus	10400	7110	DİZEL	4	5193	190/2600	6/1	MZZ 6F	ÖN-ARKA 235/75 R 17,5
MİDİBÜS INTERURBAN	Midibus	10400	6700	DİZEL	4	5193	190/2600	6/1	MZZ 6F	ÖN-ARKA 235/75 R 17,5
MİDİBÜS ROYBUS	Midibus	8800	5332	DİZEL	4	4570	121/3200	5/1	MYT 5T	ÖN-ARKA 215/75 R 17,5
MİDİBÜS ROYBUS C	Midibus	8800	5292	DİZEL	4	4570	121/3200	5/1	MYT 5T	ÖN-ARKA 215/75 R 17,5
MİDİBÜS CLASSIC	Midibus	8800	4972	DİZEL	4	4570	121/3200	5/1	MYT 5T	ÖN-ARKA 215/75 R 17,5
MİDİBÜS URBAN 22	Midibus	8800	4942	DİZEL	4	4570	121/3200	5/1	MYT 5T	ÖN-ARKA 215/75 R 17,5
MİDİBÜS URBAN 50	Midibus	8800	4852	DİZEL	4	4570	121/3200	5/1	MYT 5T	ÖN-ARKA 215/75 R 17,5
MİDİBÜS CİTİMARK	Midibus	13000	6924	DİZEL	4	5193	204/2600	6/1	MZW 6F	ÖN-ARKA 265/70 R 19,5
MİDİBÜS NOVO	Midibus	9100	6262	DİZEL	4	5193	155/2600	6/1	MYT 6S	ÖN-ARKA 215/75R17,5
MİDİBÜS NOVO LUX	Midibus	9100	6450	DİZEL	4	5193	190/2600	6/1	MZZ 6F	ÖN-ARKA 215/75R17,5
MİDİBÜS NOVO Ultra	Midibus	9800	6474	DİZEL	4	5193	190/2600	6/1	MZZ 6F	ÖN-ARKA 215/75R17,5
MİDİBÜS NOVOCİTİ	Midibus	9800	5681	DİZEL	4	5193	155/2600	6/1	MYT 6S	ÖN-ARKA 215/75R17,5
MİDİBÜS NOVOCİTİ Ultra	Midibus	9800	5835	DİZEL	4	5193	155/2600	6/1	MYT 6S	ÖN-ARKA 215/75R17,5
MİDİBÜS CİTİBUS	Midibus	14000	7900	DİZEL	4	5193	204/2600	6/1	MZW 6F	ÖN-ARKA 265/70 R 19,5
<b>B.M.C.</b>										
ÇEKİCİ PROFESYONEL PRO 1144 ACX (4x2)	R. Tractor	18000	7450	DİZEL	6	10824	435/1900	16/1	ZF 16 S 2220 TO	ÖN-ARKA 295 / 80 R22,5
KAMYON PROFESYONEL PRO 522 HHT (6x2)	Truck	21000	5900	DİZEL	6	6662	221/2500	6/1	EATON FSO 6109	ÖN-ARKA 285 / 70 R 19,5
KAMYON PROFESYONEL PRO 522 HHT (6x2)	Truck	21000	5900	DİZEL	6	6662	221/2500	9/1	ZF 9S 75	ÖN-ARKA 285 / 70 R 19,5
KAMYON PROFESYONEL PRO 522 HHX (4x2)	Truck	16000	5150	DİZEL	6	6662	221/2500	6/1	ZF 6S 850	ÖN-ARKA 285 / 70 R 19,5
KAMYON PROFESYONEL PRO 522 HHX (4x2)	Truck	16000	5200	DİZEL	6	6662	221/2500	6/1	ZF 6S 800	ÖN-ARKA 285 / 70 R 19,5
KAMYON PROFESYONEL PRO 625 DDX (4x2)	Truck	18000	5950	DİZEL	6	6662	246/2500	9/1	ZF 9S 1110	ÖN-ARKA 315 / 80 R 22,5
KAMYON PROFESYONEL PRO 625 DHT (6x2)	Truck	25000	7630	DİZEL	6	6662	246/2500	9/1	ZF 9S 109	ÖN-ARKA 315 / 80 R 22,5
KAMYON PROFESYONEL PRO 625 DHT (6x2)	Truck	25000	7600	DİZEL	6	6662	246/2500	9/1	ZF 9S 1110	ÖN-ARKA 315 / 80 R 22,5
KAMYON PROFESYONEL PRO 625 DHX (4x2)	Truck	25000	6650	DİZEL	6	6662	246/2500	9/1	ZF 9 S 1110	ÖN-ARKA 315 / 80 R 22,5
KAMYON PROFESYONEL PRO 827 DDF (8x2/2)	Truck	32000	9000	DİZEL	6	6662	281/2500	9/1	ZF 9 S 1110	ÖN-ARKA 315 / 80 R 22,5
KAMYON PROFESYONEL PRO 827 DDT (6x2)	Truck	25000	7800	DİZEL	6	6662	281/2500	9/1	ZF 9 S 1110	ÖN-ARKA 315 / 80 R 22,5
KAMYON PROFESYONEL PRO 827 DHF (8x2/2)	Truck	32000	9050	DİZEL	6	6662	281/2500	9/1	ZF 9 S 1110	ÖN-ARKA 315 / 80 R 22,5
KAMYON PROFESYONEL PRO 827 DKT (6x2)	Truck	25000	7950	DİZEL	6	6662	281/2500	9/1	ZF 9 S 1110	ÖN-ARKA 315 / 80 R 22,5
KAMYON PROFESYONEL PRO 935 EDE (8x4/4)	Truck	32000	10400	DİZEL	6	8849	345 /2100	16/1	ZF 16 S 1820 TO	ÖN-ARKA 315 / 80 R 22,5
KAMYON PROFESYONEL PRO 940 DHF (8x2/2)	Truck	32000	9450	DİZEL	6	8849	394/2100	16/1	ZF 16 S 1820	ÖN-ARKA 315 / 80 R 22,5
KAMYON PROFESYONEL PRO 940 EDB (6x4)	Truck	26000	9400	DİZEL	6	8849	394/2100	9/1	EATON FSO 10309	ÖN-ARKA 315 / 80 R 22,5
KAMYON PROFESYONEL PRO 940 EDB (6x4)	Truck	26000	9340	DİZEL	6	8849	394/2100	16/1	ZF 16 S 1820	ÖN-ARKA 315 / 80 R 22,5
KAMYON PROFESYONEL PRO 940 EDE (8x4/4)	Truck	32000	10300	DİZEL	6	8849	394/2100	16/1	ZF 16 S 1820	ÖN-ARKA 315 / 80 R 22,5
KAMYON BMC 415 CDS (4x2)	Truck	8100	2850	DİZEL	4	3760	137/2600	6/1	JAC LC6T46	ÖN-ARKA 215 / 75 R 17,5
OTOBÜS MIDILUX- L	Bus	10000	7400	DİZEL	4	4462	183/2300	6/1	ZF 6S 710 BO	ÖN-ARKA 235 / 75R 17,5
OTOBÜS PROBÜS 215SCB	Bus	13500	8490	DİZEL	6	6662	221/2300	6/1	ZF 6S 1010 BO	ÖN-ARKA 265 / 70R 19,5
OTOBÜS PROBÜS 215SCB	Bus	13400	8490	DİZEL	6	6662	282/2300	6/1	ZF 6HP 504 C	ÖN-ARKA 265 / 70R 19,5
OTOBÜS PROBÜS 850TBX	Bus	12900	9830	DİZEL	6	6662	282/2300	6/1	ZF 6HP 504 C	ÖN-ARKA 265 / 70R 19,5
OTOBÜS PROBÜS 880SC	Bus	13500	9630	DİZEL	6	6662	282/2300	6/1	ZF 6S 1010 BO	ÖN-ARKA 265 / 70R 19,5
OTOBÜS PROCİTY	Bus	18000	10840	DİZEL	6	6662	282/2300	6/1	ZF 6HP 504 C	ÖN-ARKA 275 / 70 R 22,5
OTOBÜS PROCİTY	Bus	18000	11190	DİZEL	6	6662	282/2300	6/1	ZF 6HP 504 C	ÖN-ARKA 275 / 70 R 22,5
OTOBÜS ALYOS	Bus	17500	11340	DİZEL	6	6662	282/2300	6/1	ZF S6 1200 BO	ÖN-ARKA 275 / 70 R 22,5
OTOBÜS ALYOS	Bus	17500	11340	DİZEL	6	8849	315/2100	6/1	ZF S6 1700 BO	ÖN-ARKA 275 / 70 R 22,5
<b>FORD OTOSAN</b>										
KAMYONET Connect Van T220S (1+1) L/R 90 PS	Truck	2240	1401	DİZEL	4	1753	90/4000	5/1	FORD MTX 75	ÖN-ARKA 195/65R15
KAMYONET Connect Van T220S (1+1) L/R 75PS	Truck	2240	1391	DİZEL	4	1753	75/4000	5/1	FORD MTX 75	ÖN-ARKA 195/65R15
KAMYONET PANELVAN Connect Kombi K210S (1+4) L/R 90 PS	Truck	2230	1508	DİZEL	4	1753	90/4000	5/1	FORD MTX 75	ÖN-ARKA 195/65R15
KAMYONET PANELVAN Connect Kombi K210S (1+4) L/R 75 PS	Truck	2230	1498	DİZEL	4	1753	75/4000	5/1	FORD MTX 75	ÖN-ARKA 195/65R15
KAMYONET PANELVAN Connect Kombi K210S (1+4) L/R 110 PS	Truck	2240	1525	DİZEL	4	1753	110/3750	5/1	FORD MTX 75	ÖN-ARKA 195/65R15
KAMYONET Connect Van T230L (1+1) H/R 90 PS	Truck	2340	1435	DİZEL	4	1753	90/4000	5/1	FORD MTX 75	ÖN-ARKA 195/65R15
KAMYONET Connect Van T220L (1+1) H/R 75 PS	Truck	2260	1431	DİZEL	4	1753	75/4000	5/1	FORD MTX 75	ÖN-ARKA 195/65R15
KAMYONET PANELVAN Connect Kombi K230L (1+4) H/R 90 PS	Truck	2330	1588	DİZEL	4	1753	90/4000	5/1	FORD MTX 75	ÖN-ARKA 195/65R15
KAMYONET PANELVAN Connect Kombi K230L (1+4) H/R 110 PS	Truck	2330	1578	DİZEL	4	1753	110/3750	5/1	FORD MTX 75	ÖN-ARKA 195/65R15
KAMYONET Transit 300SF Van	Truck	3025	1653	DİZEL	4	2200	140/3500	6/1	Ford VMT6	ÖN-ARKA 215/75 R16
KAMYONET Transit 330SF Van	Truck	3325	1714	DİZEL	4	2200	140/3500	6/1	Ford VMT6	ÖN-ARKA 215/75 R16
KAMYONET Transit 330MF Van	Truck	3325	1785	DİZEL	4	2200	140/3500	6/1	Ford VMT6	ÖN-ARKA 215/75 R16
KAMYONET Transit 350LF Van	Truck	3500	1849	DİZEL	4	2200	140/3500	6/1	Ford VMT6	ÖN-ARKA 215/75 R16
KAMYONET Transit 300S Van	Truck	3025	1885	DİZEL	4	2200	100/3500	6/1	Ford MT 82	ÖN-ARKA 215/75 R16



TRAKTÖR HATTAT A 60 2 WD	F. Tractor	3800	2400	DİZEL	3 TURBO	3300	68/2200	8/4	HATTAT	ÖN-ARKA 7.50-16/14.9-30
TRAKTÖR HATTAT A 60 4 WD	F. Tractor	4100	2610	DİZEL	3 TURBO	3300	68/2200	8/4	HATTAT	ÖN-ARKA 300/70R20/14.9-30
TRAKTÖR HATTAT A 65B 2 WD	F. Tractor	3800	2350	DİZEL	3 TURBO	3300	68/2200	12/12	HATTAT	ÖN-ARKA 6.00-16/13.6-24
TRAKTÖR HATTAT A 65B 4 WD	F. Tractor	4100	2550	DİZEL	3 TURBO	3300	68/2200	12/12	HATTAT	ÖN-ARKA 280/70R18/380/85R24
TRAKTÖR HATTAT A 65 2 WD	F. Tractor	3800	2400	DİZEL	3 TURBO	3300	68/2200	12/12	HATTAT	ÖN-ARKA 7.50-16/14.9-30
TRAKTÖR HATTAT A 65 4 WD	F. Tractor	4100	2610	DİZEL	3 TURBO	3300	68/2200	12/12	HATTAT	ÖN-ARKA 300/70R20/14.9-30
TRAKTÖR HATTAT A 80B 4 WD	F. Tractor	4100	2600	DİZEL	3 TURBO	3300	79/2200	12/12	HATTAT	ÖN-ARKA 280/70R18/380/85R24
TRAKTÖR HATTAT A 80C 2 WD	F. Tractor	3800	2400	DİZEL	3 TURBO	3300	79/2200	12/12	HATTAT	ÖN-ARKA 7.50-16/14.9-30
TRAKTÖR HATTAT A 80C 4 WD	F. Tractor	4100	2610	DİZEL	3 TURBO	3300	79/2200	12/12	HATTAT	ÖN-ARKA 300/70R20/14.9-30
TRAKTÖR HATTAT A 70 2 WD	F. Tractor	7000	2860	DİZEL	3 TURBO	3300	68/2200	16/8-12/12	HATTAT	ÖN-ARKA 7.50-16/16.9-30
TRAKTÖR HATTAT A 70 4 WD	F. Tractor	7000	3090	DİZEL	3 TURBO	3300	68/2200	16/8-12/12	HATTAT	ÖN-ARKA 11.2-24/16.9-30
TRAKTÖR HATTAT A 80 4 WD	F. Tractor	7000	3090	DİZEL	3 TURBO	3300	79/2200	16/8-12/12	HATTAT	ÖN-ARKA 11.2-24/16.9-30
TRAKTÖR HATTAT A 90 4 WD	F. Tractor	7060	3460	DİZEL	4 TURBO	4400	82/2200	12/12-16/8	HATTAT	ÖN-ARKA 13.6-24/16.9R34
TRAKTÖR HATTAT A 100 4 WD	F. Tractor	7060	3490	DİZEL	4 TURBO	4400	92/2200	12/12-16/8	HATTAT	ÖN-ARKA 13.6-24/16.9R34
TRAKTÖR HATTAT A 110 4 WD	F. Tractor	7060	3490	DİZEL	4 TURBO	4400	100/2200	12/12-16/8	HATTAT	ÖN-ARKA 13.6-24/16.9R34
TRAKTÖR HTT A 90 4 WD	F. Tractor	7060	3580	DİZEL	4 TURBO	4400	82/2200	12/12	HATTAT	ÖN-ARKA 13.6-24/16.9R34
TRAKTÖR HTT A 100 4 WD	F. Tractor	7060	3580	DİZEL	4 TURBO	4400	92/2200	12/12	HATTAT	ÖN-ARKA 13.6-24/16.9R34
TRAKTÖR HTT A 110 4 WD	F. Tractor	7060	3580	DİZEL	4 TURBO	4400	102/2200	12/12	HATTAT	ÖN-ARKA 13.6-24/16.9R34
TRAKTÖR POLMOT A 90 4 WD	F. Tractor	7060	3580	DİZEL	4 TURBO	4400	82/2200	12/12	HATTAT	ÖN-ARKA 13.6-24/16.9R34
TRAKTÖR POLMOT A 100 4 WD	F. Tractor	7060	3580	DİZEL	4 TURBO	4400	92/2200	12/12	HATTAT	ÖN-ARKA 13.6-24/16.9R34
TRAKTÖR POLMOT A 110 4 WD	F. Tractor	7060	3580	DİZEL	4 TURBO	4400	102/2200	12/12	HATTAT	ÖN-ARKA 13.6-24/16.9R34
TRAKTÖR URSUS A 90 4 WD	F. Tractor	7060	3580	DİZEL	4 TURBO	4400	82/2200	12/12	HATTAT	ÖN-ARKA 13.6-24/16.9R34
TRAKTÖR URSUS A 100 4 WD	F. Tractor	7060	3580	DİZEL	4 TURBO	4400	92/2200	12/12	HATTAT	ÖN-ARKA 13.6-24/16.9R34
TRAKTÖR URSUS A 110 4 WD	F. Tractor	7060	3580	DİZEL	4 TURBO	4400	102/2200	12/12	HATTAT	ÖN-ARKA 13.6-24/16.9R34

#### HONDA TÜRKİYE

OTOMOBİL CIVIC 1,6 DREAM DÜZ	P. Car	1670	1220	BENZİN	4	1598	125/6500	5/1	MANUEL	ÖN-ARKA 195/65R15
OTOMOBİL CIVIC 1,6 DREAM OTOMATİK	P. Car	1700	1241	BENZİN	4	1598	125/6500	5/1	OTOMATİK	ÖN-ARKA 195/65R15
OTOMOBİL CIVIC 1,6 PREMIUM DÜZ	P. Car	1670	1220	BENZİN	4	1598	125/6500	5/1	MANUEL	ÖN-ARKA 205/55R16
OTOMOBİL CIVIC 1,6 PREMIUM OTOMATİK	P. Car	1700	1241	BENZİN	4	1598	125/6500	5/1	OTOMATİK	ÖN-ARKA 205/55R16
OTOMOBİL CIVIC 1,6 ELEGANCE DÜZ	P. Car	1670	1220	BENZİN	4	1598	125/6500	5/1	MANUEL	ÖN-ARKA 205/55R16
OTOMOBİL CIVIC 1,6 ELEGANCE OTOMATİK	P. Car	1700	1241	BENZİN	4	1598	125/6500	5/1	OTOMATİK	ÖN-ARKA 205/55R16

#### HYUNDAI ASSAN

YENİ İ20 1.2 D-CVVT JUMP	P. Car	1515	1045	BENZİN	4	1248	62,5/6000	5/1	MANUEL	ÖN-ARKA 185/60 R 15
YENİ İ20 1.2 D-CVVT SENSE	P. Car	1515	1045	BENZİN	4	1248	62,5/6000	5/1	MANUEL	ÖN-ARKA 185/60 R 15
YENİ İ20 1.4 CVVT JUMP OTM.	P. Car	1565	1131	BENZİN	4	1396	99/5500	4/1	OTOMATİK	ÖN-ARKA 185/60 R 15
YENİ İ20 1.4 CVVT SENSE OTM.	P. Car	1565	1131	BENZİN	4	1396	73,6/5500	4/1	OTOMATİK	ÖN-ARKA 185/60 R 15
YENİ İ20 1.4 CVVT TUNE OTM.	P. Car	1565	1131	BENZİN	4	1396	73,6/5500	4/1	OTOMATİK	ÖN-ARKA 185/60 R 15
YENİ İ20 1.4 CVVT ELITE OTM.	P. Car	1565	1131	BENZİN	4	1396	73,6/5500	4/1	OTOMATİK	ÖN-ARKA 185/60 R 15
YENİ İ20 1.4 CRDI JUMP	P. Car	1650	1190	DİZEL	4	1396	66/4000	6/1	MANUEL	ÖN-ARKA 185/60 R 15
YENİ İ20 1.4 CRDI SENSE	P. Car	1650	1190	DİZEL	4	1396	66/4000	6/1	MANUEL	ÖN-ARKA 185/60 R 15
YENİ İ20 1.4 CRDI TUNE	P. Car	1650	1190	DİZEL	4	1396	66/4000	6/1	MANUEL	ÖN-ARKA 185/60 R 15
YENİ İ20 1.4 CRDI ELITE	P. Car	1650	1190	DİZEL	4	1396	66/4000	6/1	MANUEL	ÖN-ARKA 185/60 R 15

#### KARSAN

KAMYONET HD35 ( Euro 5 ) WB 2820 mm	Pick Up	3500	2460	DİZEL	4	3933	140/2700	5/1 or 6/1	HMC	ÖN-ARKA 205/75 R16
KAMYONET HD35 ( Euro 5 ) WB 3415 mm	Pick Up	3500	2592	DİZEL	4	3933	140/2700	5/1 or 6/1	HMC	ÖN-ARKA 205/75 R16
KAMYON HD75 ( 103 kW ) WB 3415 mm	Truck	7500	2756	DİZEL	4	3933	140/2700	5/1 or 6/1	HMC	ÖN-ARKA 8,5 R 17,5
KAMYON HD75 ( 103 kW ) WB 3610 mm	Truck	7500	2793	DİZEL	4	3933	140/2700	5/1 or 6/1	HMC	ÖN-ARKA 8,5 R 17,5
KAMYON HD75 ( 103 kW ) WB 3775 mm	Truck	7500	2830	DİZEL	4	3933	140/2700	5/1 or 6/1	HMC	ÖN-ARKA 8,5 R 17,5
KAMYON HD75 Hihgpower ( 117,6 kW ) WB 3415 mm	Truck	7500	2756	DİZEL	4	3933	160/2500	5/1 or 6/1	HMC	ÖN-ARKA 8,5 R 17,5
KAMYON HD75 Hihgpower ( 117,6 kW ) WB 3610 mm	Truck	7500	2793	DİZEL	4	3933	160/2500	5/1 or 6/1	HMC	ÖN-ARKA 8,5 R 17,5
KAMYON HD75 Hihgpower ( 117,6 kW ) WB 3775 mm	Truck	7500	2830	DİZEL	4	3933	160/2500	5/1 or 6/1	HMC	ÖN-ARKA 8,5 R 17,5

OTOMOBİL BERLINGO Uzun 1,6i	P.Car	2190	1232	BENZİN	4	1587	110/5800	5/1	PSA	ÖN-ARKA 185/60 R15
OTOMOBİL BERLINGO Uzun 1,9D (7 KOLTUK)	P.Car	2230	1267	DİZEL	4	1868	72/4600	5/1	PSA	ÖN-ARKA 175/70 R14
OTOMOBİL BERLINGO Kısa 1,9D	P.Car	1840	1240	DİZEL	4	1868	72/4600	5/1	PSA	ÖN-ARKA 175/70 R14
OTOMOBİL BERLINGO Kısa 1,4i	P.Car	1780	1197	BENZİN	4	1360	75/5500	5/1	PSA	ÖN-ARKA 175/70 R14
OTOMOBİL PARTNER Uzun 1,6i	P.Car	2190	1232	BENZİN	4	1587	110/5800	5/1	PSA	ÖN-ARKA 185/60 R15
OTOMOBİL PARTNER Uzun 1,9D (7 KOLTUK)	P.Car	2230	1267	DİZEL	4	1868	72/4600	5/1	PSA	ÖN-ARKA 175/70 R14
OTOMOBİL PARTNER Kısa 1,9D	P.Car	1840	1240	DİZEL	4	1868	72/4600	5/1	PSA	ÖN-ARKA 175/70 R14
OTOMOBİL PARTNER Kısa 1,6 HDI 90 HP	P.Car	1875	1283	DİZEL	4	1560	90/4000	5/1	PSA	ÖN-ARKA 185/65 R15
OTOMOBİL PARTNER Kısa 1,6 HDI 75 HP	P.Car	1943	1242	DİZEL	4	1560	75/4000	5/1	PSA	ÖN-ARKA 175/70 R14
OTOMOBİL PARTNER Kısa 1,4i	P.Car	1780	1197	BENZİN	4	1360	75/5500	5/1	PSA	ÖN-ARKA 175/70 R14
KAMYONET BERLINGO Uzun 1,6i	Pick Up	2130	1247	BENZİN	4	1587	110/5800	5/1	PSA	ÖN-ARKA 185/60 R15
KAMYONET BERLINGO Uzun 1,9D	Pick Up	2160	1284	DİZEL	4	1868	72/4600	5/1	PSA	ÖN-ARKA 175 75 R14
KAMYONET BERLINGO Uzun 1,6 HDI 90 HP	Pick Up	2160	1281	DİZEL	4	1560	90/4000	5/1	PSA	ÖN-ARKA 185/60 R15
KAMYONET BERLINGO Kısa 1,9D (800 kg)	Pick Up	1955	1342	DİZEL	4	1868	72/4600	5/1	PSA	ÖN-ARKA 175/65 R14
KAMYONET BERLINGO Kısa 1,4i	Pick Up	1855	1230	BENZİN	4	1360	75/5500	5/1	PSA	ÖN-ARKA 175/65 R14
KAMYONET PARTNER Uzun 1,6i	Pick Up	2130	1247	BENZİN	4	1587	110/5800	5/1	PSA	ÖN-ARKA 185/60 R15
KAMYONET PARTNER Uzun 1,9D	Pick Up	2160	1284	DİZEL	4	1868	72/4600	5/1	PSA	ÖN-ARKA 175 75 R14
KAMYONET PARTNER Kısa 1,9D	Pick Up	1955	1342	DİZEL	4	1868	72/4600	5/1	PSA	ÖN-ARKA 175/65 R14
KAMYONET PARTNER Uzun 1,6 HDI 75 HP	Pick Up	2140	1276	DİZEL	4	1560	75/4000	5/1	PSA	ÖN-ARKA 175 75 R14
KAMYONET PARTNER Kısa 1,4i	Pick Up	1855	1230	BENZİN	4	1360	75/5500	5/1	PSA	ÖN-ARKA 175/65 R14
ÇEKİCİ Premium T4x2 Euro5 EEV	R.Tractor	19000	6795	DİZEL	6	10837	430/1800	/1 or AUTOMATİK	RT	ÖN-ARKA 315/80 R22,5 or 315/70 R22,5
ÇEKİCİ Premium T4x2 Euro5 EEV	R.Tractor	19000	6795	DİZEL	6	10837	460/1800	/1 or AUTOMATİK	RT	ÖN-ARKA 315/80 R22,5 or 315/70 R22,5
ÖTOBÜS Avancity +L (12.000 mm ) = Avancity diesel urban + suburban	Bus	18000	11475	DİZEL	6	7146	290/2100	4/1	ZF	ÖN-ARKA 275/70 R 22,5
ÖTOBÜS Avancity + L CNG ( 12.000 mm ) only urban	Bus	18000	11825	CNG	6	6880	279/2200	4/1	ZF	ÖN-ARKA 275/70 R 22,5
ÖTOBÜS Avancity +L (12.000 mm ) = Avancity diesel urban + suburban	Bus	18000	11475	DİZEL	6	7146	290/2100	4/1	VOITH	ÖN-ARKA 275/70 R 22,5
ÖTOBÜS Avancity + L CNG ( 12.000 mm ) only urban	Bus	18000	11825	CNG	6	6880	279/2200	4/1	VOITH	ÖN-ARKA 275/70 R 22,5







LAND ROVER DEFENDER 110 Panelvan	Pick Up	3050	2040	DİZEL	4	2402	122/3500	6/1	MT-82	ÖN-ARKA 7.50 R16
LAND ROVER DEFENDER 110 PU	Pick Up	3050	2130	DİZEL	4	2402	122/3500	6/1	MT-82	ÖN-ARKA 7.50 R16
LAND ROVER DEFENDER 130 PU Tek Kabin	Pick Up	3500	2185	DİZEL	4	2402	122/3500	6/1	MT-82	ÖN-ARKA 235/85 R16
LAND ROVER DEFENDER 130 PU Çift Kabin	Pick Up	3500	2200	DİZEL	4	2402	122/3500	6/1	MT-82	ÖN-ARKA 235/85 R16
<b>OYAK RENAULT</b>										
OTOMOBİL SYMBOL 1.2 16 V	P. Car	1430	885	BENZİN	4	1149	75/5500	5/1	JB1	ÖN-ARKA 175/65 R 14
OTOMOBİL SYMBOL 1.4 8V	P. Car	1460	940	BENZİN	4	1390	75/5500	5/1	JB1	ÖN-ARKA 175/65 R 14
OTOMOBİL SYMBOL 1.6 16 V	P. Car	1490	950	BENZİN	4	1598	110 / 6000	5/1	JB3	ÖN-ARKA 175/65 R 14
OTOMOBİL SYMBOL 1.6 16 V AUTOMATIC	P. Car	1555	1039	BENZİN	4	1598	110 / 6000	OTOMATİK	DPO	ÖN-ARKA 175/65 R 15
OTOMOBİL SYMBOL 1.5 dCi ( 70 hp )	P. Car	1500	945	DİZEL	4	1461	65/4000	5/1	JB3	ÖN-ARKA 175/65 R 14
OTOMOBİL SYMBOL 1.5 dCi ( 85 hp )	P. Car	1500	945	DİZEL	4	1461	80/4000	5/1	JC5	ÖN-ARKA 175/65 R 14
OTOMOBİL FLUENCE Sedan DİZEL 1.5 ( 90 bg )	P. Car	1760	1280	DİZEL	4	1461	85 / 3750	5/1	JR5	ÖN-ARKA 205/65 R 15 ÖN-ARKA 205/60 R 16 ÖN-ARKA 205/55 R 17
OTOMOBİL FLUENCE Sedan DİZEL 1.5 ( 110 bg )	P. Car	1777	1280	DİZEL	4	1461	105 / 4000	6/1	TL4	ÖN-ARKA 205/65 R 15 ÖN-ARKA 205/60 R 16 ÖN-ARKA 205/55 R 17
OTOMOBİL FLUENCE Sedan DİZEL 1.5 OTOMATİK "EDC" ( 110 bg )	P. Car	1814	1389	DİZEL	4	1461	110 / 4000	OTOMATİK	DC4	ÖN-ARKA 205/65 R 15 ÖN-ARKA 205/60 R 16 ÖN-ARKA 205/55 R 17
OTOMOBİL FLUENCE Sedan DİZEL 1.6 ( 130 bg )	P. Car	1850	1390	DİZEL	4	1598	130 / 4000	6/1	ND4	ÖN-ARKA 205/65 R 15 ÖN-ARKA 205/60 R 16 ÖN-ARKA 205/55 R 17
OTOMOBİL FLUENCE Sedan BENZİNLI 1.6 16V Düz vites	P. Car	1725	1265	BENZİN	4	1598	110 / 6000	5/1	JH3	ÖN-ARKA 205/65 R 15 ÖN-ARKA 205/60 R 16 ÖN-ARKA 205/55 R 17
OTOMOBİL FLUENCE Sedan BENZİNLI 1.6 16V Otomatik	P. Car	1767	1280	BENZİN	4	1598	115 / 6000	OTOMATİK	CVT	ÖN-ARKA 205/65 R 15 ÖN-ARKA 205/60 R 16 ÖN-ARKA 205/55 R 17
OTOMOBİL FLUENCE Sedan BENZİNLI 2,0 16V Düz vites	P. Car	1760	1260	BENZİN	4	1997	143 / 6000	6 / 1	TL4	ÖN-ARKA 205/65 R 15 ÖN-ARKA 205/60 R 16 ÖN-ARKA 205/55 R 17
OTOMOBİL FLUENCE Sedan BENZİNLI 2,0 16V Otomatik	P. Car	1785	1268	BENZİN	4	1997	143 / 6000	OTOMATİK	FK0 ( CVT )	ÖN-ARKA 205/65 R 15 ÖN-ARKA 205/60 R 16 ÖN-ARKA 205/55 R 17
OTOMOBİL FLUENCE Elektrikli	P. Car	2023	1605	ELEKTRİKLİ	-	-	70 hp ( 50 kw )			ÖN-ARKA 205/55 R 16
OTOMOBİL MEGANE III Hatch-back 5 kapı DİZEL 1.5 ( 90 bg )	P. Car	1766	1280	DİZEL	4	1461	85 / 3750	5/1	JR5	ÖN-ARKA 205/65 R 15 ÖN-ARKA 205/60 R 16 ÖN-ARKA 205/55 R 17
OTOMOBİL MEGANE III Hatch-back 5 kapı DİZEL 1.5 (110 bg )	P. Car	1772	1280	DİZEL	4	1461	105 / 4000	6/1	TL4	ÖN-ARKA 205/65 R 15 ÖN-ARKA 205/60 R 16 ÖN-ARKA 205/55 R 17
OTOMOBİL MEGANE III Hatchback DİZEL 1.5 OTOMATİK "EDC" ( 110 bg )	P. Car	1809	1384	DİZEL	4	1461	110 / 4000	OTOMATİK	DC4	ÖN-ARKA 205/65 R 15 ÖN-ARKA 205/60 R 16 ÖN-ARKA 205/55 R 17
OTOMOBİL MEGANE III Hatch-back 5 kapı BENZİNLI 1.6 16V Düz vites	P. Car	1720	1260	BENZİN	4	1598	110 / 6000	5/1	JH3	ÖN-ARKA 205/65 R 15 ÖN-ARKA 205/60 R 16 ÖN-ARKA 205/55 R 17
OTOMOBİL MEGANE III Hatch-back 5 kapı BENZİNLI 1.6 16V Otomatik vites	P. Car	1767	1280	BENZİN	4	1598	115 / 6000	OTOMATİK	CVT	ÖN-ARKA 205/65 R 15 ÖN-ARKA 205/60 R 16 ÖN-ARKA 205/55 R 17
OTOMOBİL MEGANE III Hatchback BENZİNLI 2,0 16V Düz vites	P. Car	1758	1273	BENZİN	4	1997	143 / 6000	6 / 1	TL4	ÖN-ARKA 205/65 R 15 ÖN-ARKA 205/60 R 16 ÖN-ARKA 205/55 R 17
OTOMOBİL MEGANE III Hatchback BENZİNLI 2,0 16V Otomatik	P. Car	1783	1281	BENZİN	4	1997	143 / 6000	OTOMATİK	FK0 ( CVT )	ÖN-ARKA 205/65 R 15 ÖN-ARKA 205/60 R 16 ÖN-ARKA 205/55 R 17
OTOMOBİL CLİO IV hatch-back 5 kapı 1,2 16V	P. Car	1610	1105	BENZİN	4	1149	75 / 5500	5/1	JHQ	ÖN-ARKA 185/65 R15 ÖN-ARKA 195/55 R16 ÖN-ARKA 205/45 R17
OTOMOBİL CLİO IV hatch-back 5 kapı 0,9 l 16V	P. Car	1640	1130	BENZİN	3	898	90 / 5250	5/1	JHQ	ÖN-ARKA 185/65 R15 ÖN-ARKA 195/55 R16 ÖN-ARKA 205/45 R17
OTOMOBİL CLİO IV hatch-back 5 kapı 1,5 l DİZEL 75 hp	P. Car	1703	1194	DİZEL	4	1461	75 / 4000	5/1	JRQ	ÖN-ARKA 185/65 R15 ÖN-ARKA 195/55 R16 ÖN-ARKA 205/45 R17
OTOMOBİL CLİO IV hatch-back 5 kapı 1,5 l DİZEL 90 hp	P. Car	1711	1196	DİZEL	4	1461	90 / 4000	5/1	JRQ	ÖN-ARKA 185/65 R15 ÖN-ARKA 195/55 R16
<b>TEMSA GLOBAL</b>										
OTOBÜS AVENUE LF 12	Bus	18000	11440	DİZEL	6	9186	310/1900	6/1	OTOM VOITH 864.5E INTARDER	ÖN-ARKA 275/70 R22.5
OTOBÜS AVENUE LF12	Bus	18000	10800	DİZEL	6	6692.4	285/2300	6/1	OTOM ZF 6AP1200 INTARDER	ÖN-ARKA 275/70 R22.5
OTOBÜS AVENUE LF 12	Bus	18000	11440	DİZEL	6	9186	310/1900	6/1	OTOM ZF 6AP1400 INTARDER	ÖN-ARKA 275/70 R22.5
OTOBÜS BUS01 EPA10	Bus	18000	12000	DİZEL	6	8900	345/1400	6/1	OTOM ALLISON B500	ÖN-ARKA 295/80R22.5
OTOBÜS BUS01 EPA07	Bus	18000	12000	DİZEL	6	8900	365/1400	6/1	OTOM ALLISON B500R INTARDER	ÖN-ARKA 295/80R22.5
OTOBÜS DIAMOND 14	Bus	25300	17130	DİZEL	6	12816	480/1900	12/1	OTOM ZF ASTRONIC INTARDER	ÖN-ARKA 275/70 R22.5
OTOBÜS TS30 9.3	Bus	14440	9580	DİZEL	6	6692.4	250/2300	6/1	OTOM ALLISON T300	ÖN-ARKA 265/70R19.5
OTOBÜS TS30 9.3	Bus	14440	9580	DİZEL	6	6692.4	250/2300	6/1	OTOM ALLISON T300R INTARDER	ÖN-ARKA 265/70R19.5
OTOBÜS TOURMALIN IC 12.8	Bus	19000	12500	DİZEL	6	9186	360/1900	6/1	OTOM ZF 6AP1700 INTARDER	ÖN-ARKA 295/80R22.5
OTOBÜS TOURMALIN IC 12.8	Bus	19000	12500	DİZEL	6	9186	360/1900	6/1	OTOM ZF 6HP594C INTARDER	ÖN-ARKA 295/80R22.5
OTOBÜS TOURMALIN IC 12.8	Bus	19000	12500	DİZEL	6	9186	300/2500	6/1	MNL ZF 6S 1010 BO	ÖN-ARKA 295/80R22.5









TRAKTÖR JX55C 2WD KABINLİ	F. Tractor	4500	2450	DİZEL	4 TURBO	3200	55/2300	8/8	NEW HOLLAND	ÖN 6.50-16 ARKA 380/70R28
TRAKTÖR JX55C 4WD KABINLİ	F. Tractor	4800	2800	DİZEL	4 TURBO	3200	55/2300	8/8	NEW HOLLAND	ÖN 12.4R20 ARKA 14.9R30
TRAKTÖR JX65C 2WD ROPSLU	F. Tractor	4500	2250	DİZEL	4 TURBO	3200	65/2300	8/8	NEW HOLLAND	ÖN 6.50-16 ARKA 380/70R28
TRAKTÖR JX65C 4WD ROPSLU	F. Tractor	4800	2600	DİZEL	4 TURBO	3200	65/2300	8/8	NEW HOLLAND	ÖN 12.4R20 ARKA 14.9R30
TRAKTÖR JX65C 2WD KABINLİ	F. Tractor	4500	2450	DİZEL	4 TURBO	3200	65/2300	8/8	NEW HOLLAND	ÖN 6.50-16 ARKA 380/70R28
TRAKTÖR JX65C 4WD KABINLİ	F. Tractor	4800	2800	DİZEL	4 TURBO	3200	65/2300	8/8	NEW HOLLAND	ÖN 12.4R20 ARKA 14.9R30
TRAKTÖR JX75C 2WD ROPSLU	F. Tractor	4500	2250	DİZEL	4 TURBO	3200	75/2300	8/8	NEW HOLLAND	ÖN 6.50-16 ARKA 380/70R28
TRAKTÖR JX75C 4WD ROPSLU	F. Tractor	4800	2600	DİZEL	4 TURBO	3200	75/2300	8/8	NEW HOLLAND	ÖN 12.4R20 ARKA 14.9R30
TRAKTÖR JX75C 2WD KABINLİ	F. Tractor	4500	2450	DİZEL	4 TURBO	3200	75/2300	8/8	NEW HOLLAND	ÖN 6.50-16 ARKA 380/70R28
TRAKTÖR JX75C 4WD KABINLİ	F. Tractor	4800	2800	DİZEL	4 TURBO	3200	75/2300	8/8	NEW HOLLAND	ÖN 12.4R20 ARKA 14.9R30

DİZEL = Diesel

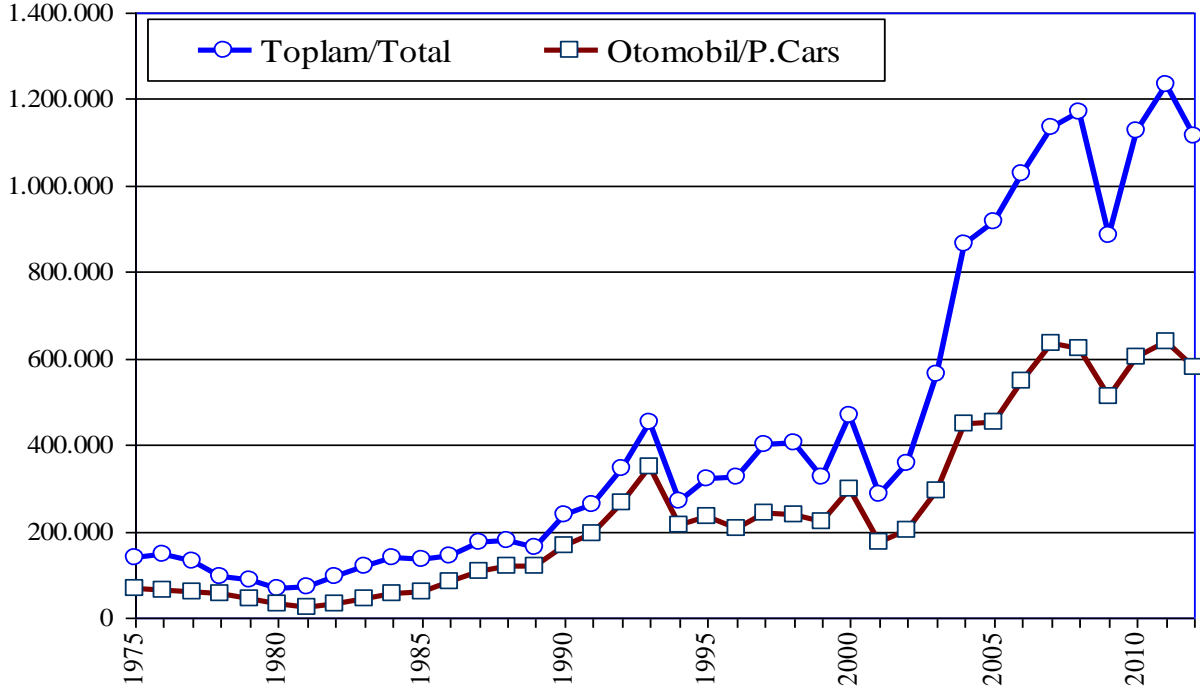
BENZİN = Petrol

ÖN-ARKA = Front-Rear KAT = Ply

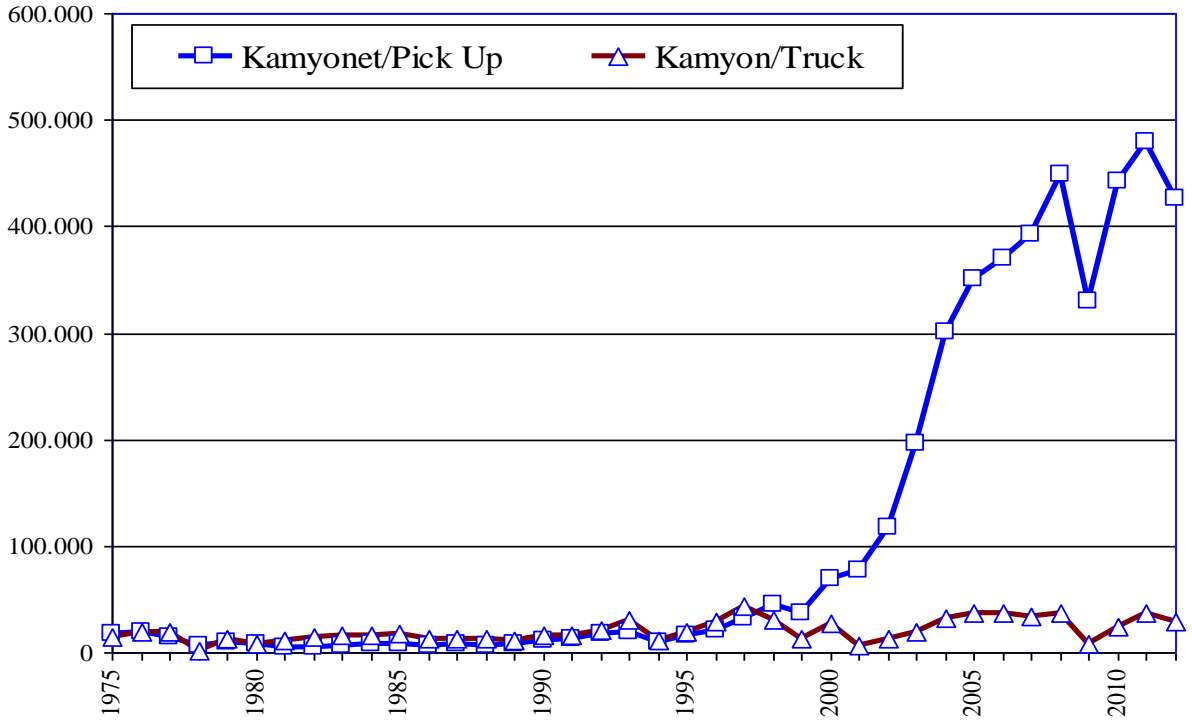
**OTOMOTİV SANAYİİ FİRMALARININ  
2013 YILI ÜRETİM KAPASİTELERİ  
Production Capacities 2013**

<b>FİRMALAR Firms</b>	<b>OTOMOBİL P.Car</b>	<b>KAMYON Truck</b>	<b>KAMYONET Pick Up</b>	<b>OTOBÜS Bus</b>	<b>MİNİBÜS Mini-Bus</b>	<b>MİDİBÜS Midi-Bus</b>	<b>TRAKTÖR F. Tractor</b>	<b>TOPLAM Total</b>
<b>A. ISUZU</b>	0	7.200	2.400	0	922	2.633	0	13.155
<b>B.M.C.</b>	0	10.000	5.000	1.800	3.200	0	0	20.000
<b>FORD OTOSAN</b>	0	10.000	270.000	0	50.000	0	0	330.000
<b>HATTAT TARIM</b>	0	0	0	0	0	0	15.000	15.000
<b>HONDA TÜRKİYE</b>	50.000	0	0	0	0	0	0	50.000
<b>HYUNDAI ASSAN</b>	100.000	0	15.000	0	10.000	0	0	125.000
<b>KARSAN</b>	0	4.000	20.000	480	3.500	0	0	27.980
<b>M.A.N. TÜRKİYE</b>	0	0	0	1.700	0	0	0	1.700
<b>M. BENZ TÜRK</b>	0	11.718	0	2.000	0	0	0	13.718
<b>OTOKAR</b>	0	0	4.200	1.000	1.500	2.100	0	8.800
<b>O. RENAULT</b>	360.000	0	0	0	0	0	0	360.000
<b>TEMSA GLOBAL</b>	0	4.500	3.000	2.000	0	2.000	0	11.500
<b>TOFAŞ</b>	400.000	0	0	0	0	0	0	400.000
<b>TOYOTA</b>	150.000	0	0	0	0	0	0	150.000
<b>T. TRAKTÖR</b>	0	0	0	0	0	0	40.000	40.000
<b>TOPLAM/Total</b>	<b>1.060.000</b>	<b>47.418</b>	<b>319.600</b>	<b>8.980</b>	<b>69.122</b>	<b>6.733</b>	<b>55.000</b>	<b>1.566.853</b>

## Otomobil /Toplam Üretim P.Cars /Total Production

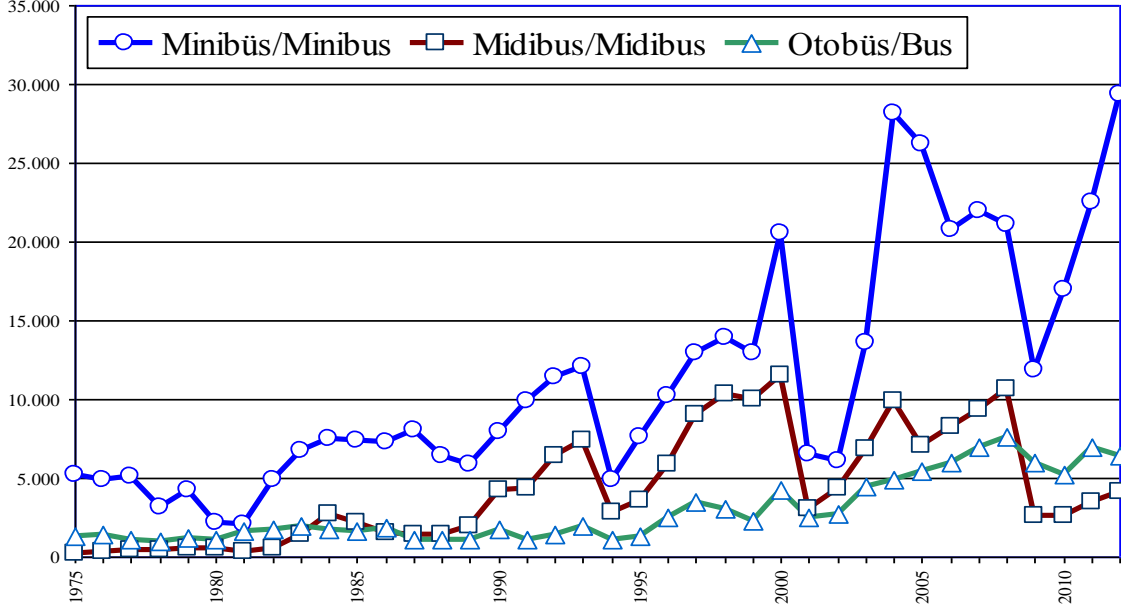


## Yük Taşıt Araçları Üretimi Truck and Pick Up Production

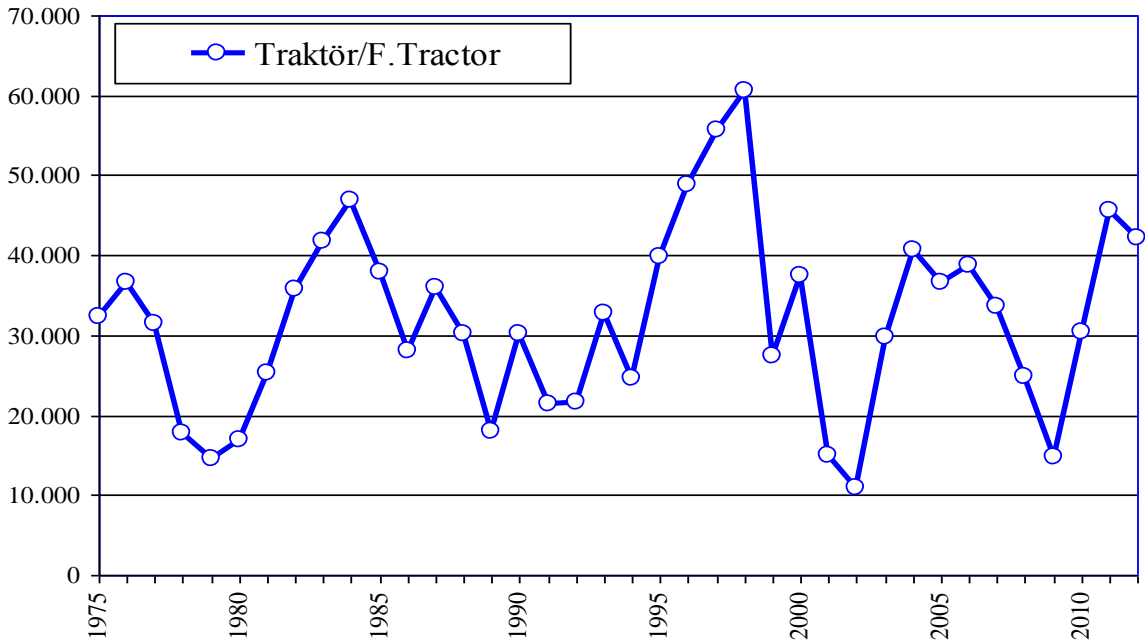




## Yolcu Taşıt Araçları Üretimi Bus Production



## Traktör Üretimi F.Tractor Production

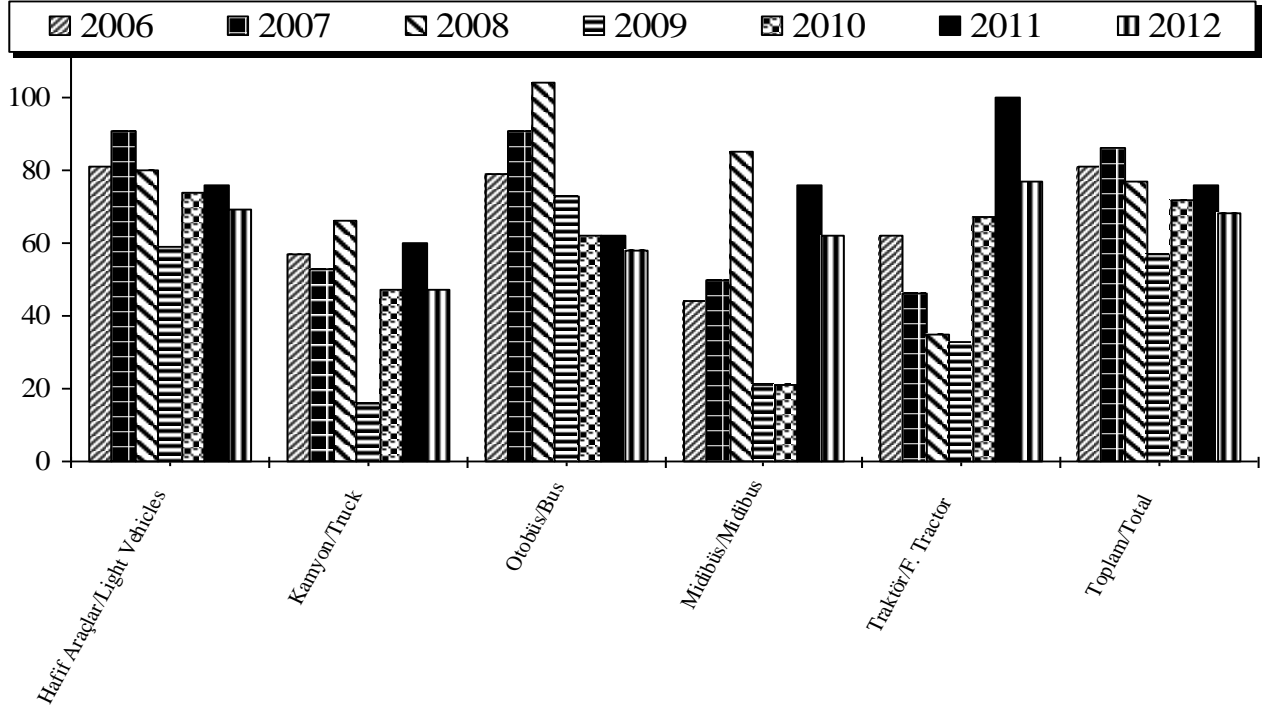


**OTOMOTİV SANAYİİ FİRMALARININ ÜRETİM ADETLERİ**  
**The Production Units Of The Automotive Manufacturers**

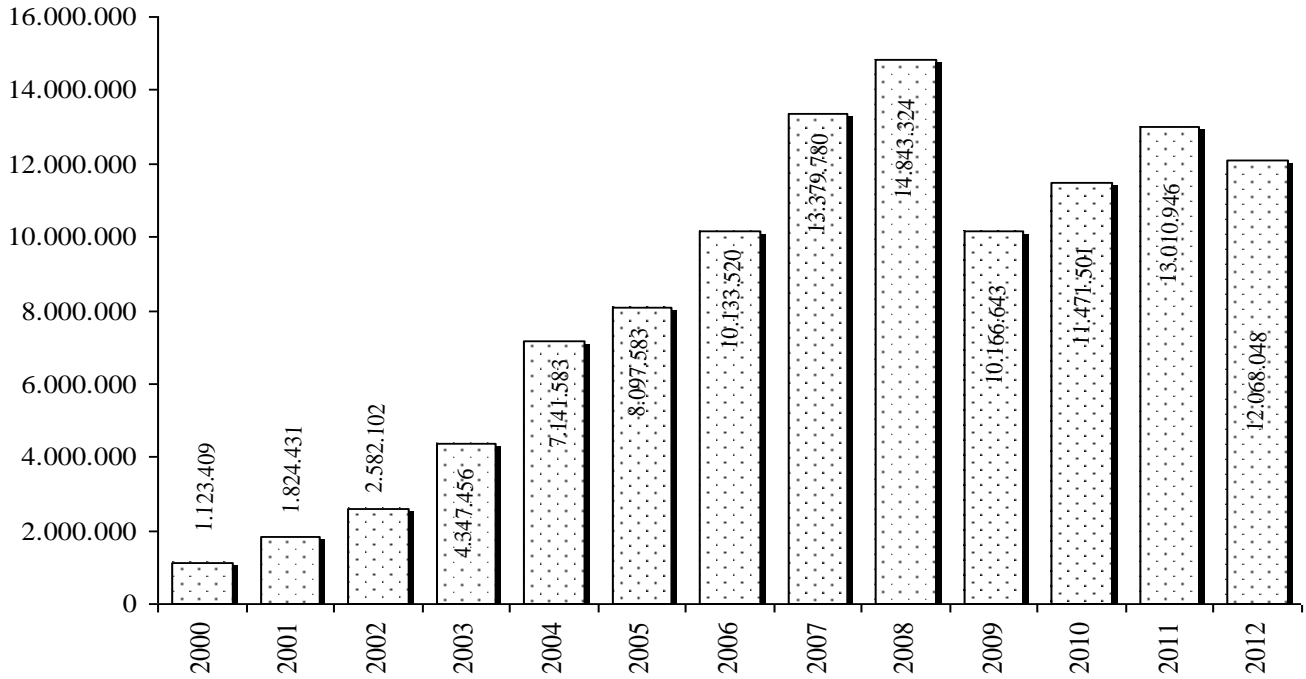
ARALIK SONU / By The end of December

YILLAR Years	OTOMOBİL P.Car	KAMYON Truck	KAMYONET Pick-Up	OTOBÜS Bus	MİNİBÜS Minibus	MİDİBÜS Midibus	TRAKTÖR F.Tractor	TOPLAM Total
1963	30	999	1.458	12	631	0	7.982	11.112
1964	100	2.741	885	56	401	0	7.006	11.189
1965	60	2.350	300	122	1.199	0	6.419	10.450
1966	18	6.258	2.476	174	0	252	8.969	18.147
1967	1.760	7.816	2.736	325	622	0	13.976	27.235
1968	2.852	9.408	2.270	466	895	0	15.118	31.009
1969	3.902	10.859	3.030	882	1.095	84	13.412	33.264
1970	3.660	6.041	4.395	806	1.099	4	7.518	23.523
1971	12.888	4.747	4.508	608	1.891	30	15.687	40.359
1972	29.628	8.596	6.044	988	3.748	0	22.893	71.897
1973	46.855	11.723	8.674	1.267	4.533	22	32.585	105.659
1974	59.906	10.591	11.861	1.113	4.584	148	25.363	113.566
1975	67.291	14.670	18.489	1.284	5.222	239	32.365	139.560
1976	62.992	20.498	19.415	1.376	4.910	302	36.602	146.095
1977	58.245	20.700	14.016	1.077	5.152	467	31.380	131.037
1978	54.085	13.144	6.879	972	3.163	444	17.673	96.360
1979	43.808	13.367	9.384	1.151	4.222	547	14.484	86.963
1980	31.529	8.308	7.322	1.101	2.130	491	16.936	67.817
1981	25.306	12.486	5.454	1.584	2.040	378	25.358	72.606
1982	31.195	15.131	4.991	1.703	4.850	587	35.716	94.173
1983	42.509	17.514	6.822	1.964	6.712	1.382	41.799	118.702
1984	54.832	17.518	7.279	1.766	7.460	2.750	46.782	138.387
1985	60.353	18.162	7.888	1.637	7.397	2.191	37.830	135.458
1986	82.032	13.646	6.605	1.813	7.318	1.508	28.053	140.975
1987	107.185	13.545	7.580	1.137	8.026	1.434	35.986	174.893
1988	120.796	12.842	7.196	1.078	6.401	1.449	30.167	179.929
1989	118.314	11.763	7.250	1.069	5.898	1.984	18.077	164.355
1990	167.556	16.933	10.553	1.689	7.898	4.288	30.098	239.015
1991	195.574	16.918	13.541	1.075	9.912	4.401	21.381	262.802
1992	265.245	21.266	16.984	1.415	11.450	6.399	21.723	344.482
1993	348.095	31.343	19.766	1.933	12.084	7.435	32.809	453.465
1994	212.651	12.108	9.602	1.034	4.924	2.855	25.169	268.343
1995	233.412	19.759	16.808	1.279	7.645	3.537	44.068	326.508
1996	207.757	29.432	21.032	2.499	10.171	5.856	52.590	329.337
1997	242.780	43.693	32.435	3.449	12.935	9.060	55.565	399.917
1998	239.937	31.823	45.517	3.040	13.910	10.275	60.500	405.002
1999	222.041	13.096	37.551	2.327	12.894	9.953	27.435	325.297
2000	297.476	28.348	68.807	4.213	20.597	11.506	37.434	468.381
2001	175.343	6.683	76.672	2.501	6.486	3.000	15.052	285.737
2002	204.198	12.295	116.872	2.684	6.139	4.377	10.840	357.405
2003	294.116	19.041	195.606	4.490	13.625	6.794	29.778	563.450
2004	447.152	31.790	301.563	4.839	28.161	9.903	40.665	864.073
2005	453.663	37.227	349.885	5.406	26.162	7.109	36.527	915.979
2006	545.682	37.026	369.862	6.019	20.728	8.263	38.841	1.026.421
2007	634.883	34.544	391.737	6.946	21.999	9.305	33.518	1.132.932
2008	621.567	36.800	449.434	7.526	21.123	10.660	24.807	1.171.917
2009	510.931	8.246	330.044	5.931	11.829	2.624	14.861	884.466
2010	603.394	23.851	442.408	5.268	16.978	2.658	30.425	1.124.982
2011	639.734	37.396	479.110	6.907	22.475	3.509	45.506	1.234.637
2012	577.296	29.129	426.633	6.427	29.335	4.158	42.255	1.115.233

## Kapasite Kullanımı (%) Capacity Usage (%)



## OSD Üyeleri İhracat (US Dollars) (Bin/Thousand) OSD Members Exports



**YILLAR İTİBARIYLA ÜRETİM ADETLERİ VE KAPASİTE KULLANIMI**  
Production Units And Capacity Usage By Years

ARALIK SONU/By the end of December

TİPLER / Types	1997	1998	1999	2000	2001	2002	2003	2004	2005	2006	2007	2008	2009	2010	2011	2012
OTOMOBİL / P.Car	242.780	239.937	222.041	297.476	175.343	204.198	294.116	447.152	453.663	545.682	634.883	621.567	510.931	603.394	639.734	577.296
KAMYON / Truck	43.693	31.823	13.096	28.348	6.683	12.295	19.041	31.790	37.227	37.026	34.544	36.800	8.246	23.851	37.396	29.129
KAMYONET / Pick-Up	32.435	45.517	37.551	68.807	76.672	116.872	195.606	301.563	349.885	369.862	391.737	449.434	330.044	442.408	479.110	426.633
OTOBÜS / Bus	3.449	3.040	2.327	4.213	2.501	2.684	4.490	4.839	5.406	6.019	6.946	7.526	5.931	5.268	6.907	6.427
MİNİBÜS / Minibus	12.935	13.910	12.894	20.597	6.486	6.139	13.625	28.161	26.162	20.728	21.999	21.123	11.829	16.978	22.475	29.335
MİDİBÜS / Midibus	9.060	10.275	9.953	11.506	3.000	4.377	6.794	9.903	7.109	8.263	9.305	10.660	2.624	2.658	3.509	4.158
TRAKTÖR / F.Tractor	55.565	60.500	27.435	37.434	15.052	10.840	29.778	40.665	36.527	38.841	33.518	24.807	14.861	30.425	45.506	42.255
<b>TOPLAM / Total</b>	<b>399.917</b>	<b>405.002</b>	<b>325.297</b>	<b>468.381</b>	<b>285.737</b>	<b>357.405</b>	<b>563.450</b>	<b>864.073</b>	<b>915.979</b>	<b>1.026.421</b>	<b>1.132.932</b>	<b>1.171.917</b>	<b>884.466</b>	<b>1.124.982</b>	<b>1.234.637</b>	<b>1.115.233</b>

NOT: EN YÜKSEK ÜRETİM ADETLERİ [ ] İÇİNE ALINMIŞTIR.

Note: The highest production volumes are shown in [ ]

**KAPASİTE KULLANIMI**  
Capacity Usage

% 49	% 49	50%	36%	29%	35%	52%	73%	76%	81%	86%	77%	57%	72%	76%	76%
------	------	-----	-----	-----	-----	-----	-----	-----	-----	-----	-----	-----	-----	-----	-----

**OTOMOTİV SANAYİİ FİRMALARININ İHRACATLARI**  
Automotive Industry Exports

ARALIK SONU/By the end of December

TİPLER / Types	YILLAR / Years									
	2008		2009		2010		2011		2012	
	ADET Units	DEĞER \$ Value	ADET Units	DEĞER \$ Value	ADET Units	DEĞER \$ Value	ADET Units	DEĞER \$ Value	ADET Units	DEĞER \$ Value
<b>OTOMOBİL / P. Car</b>	530.175	7.338.172.370	340.211	4.603.458.146	393.577	5.100.281.905	405.919	5.289.921.692	383.850	4.773.273.240
<b>KAMYON / Truck</b>	9.740	718.225.590	1.890	162.028.403	2.248	166.523.409	3.618	238.457.284	2.697	188.722.464
<b>KAMYONET / Pick Up</b>	348.814	5.022.968.619	270.894	3.583.111.873	340.225	4.259.641.966	354.450	4.994.360.768	321.206	4.462.472.072
<b>OTOBÜS / Bus</b>	5.521	1.098.374.965	4.368	851.987.295	3.556	694.535.225	4.196	844.773.764	4.059	787.872.937
<b>MİNİBÜS / Minibus</b>	14.270	290.029.482	9.674	138.792.878	12.416	227.391.269	20.114	360.950.511	16.590	308.654.809
<b>MİDİBÜS / Midibus</b>	2.143	163.516.254	1.203	89.534.719	857	56.923.573	660	47.832.717	1.189	71.772.844
<b>TRAKTÖR / F. Tractor</b>	10.420	212.036.447	8.672	173.671.038	9.214	176.043.967	10.152	205.861.160	15.424	312.921.170
<b>YEDEK PARÇA / Miscellaneous Parts</b>		484.509.113		564.058.442		790.159.387		1.028.788.578		1.162.358.056
<b>TOPLAM / Total</b>	<b>921.083</b>	<b>15.327.832.840</b>	<b>636.912</b>	<b>10.166.642.794</b>	<b>762.093</b>	<b>11.471.500.701</b>	<b>799.109</b>	<b>13.010.946.474</b>	<b>745.015</b>	<b>12.068.047.592</b>

YURTİÇİ TEŞVİKLİ SATIŞLARI HARİÇTİR / Excluding Local Incentive Sales

## OTOMOBİL İTHALATI / Passenger Car Imports

BÖLGE / ÜLKE Region / Country	2007		2008		2009		2010		2011		2012	
	Adet / Unit	%	Adet / Unit	%	Adet / Unit	%	Adet / Unit	%	Adet / Unit	%	Adet / Unit	%
<b>AT + EFTA / EU + EFTA</b>	<b>195.361</b>	<b>82,5</b>	<b>165.435</b>	<b>80,0</b>	<b>190.919</b>	<b>78,4</b>	<b>295.920</b>	<b>83,6</b>	<b>351.067</b>	<b>84,8</b>	<b>327.391</b>	<b>79,9</b>
<b>DOĞU AVRUPA / East Europe</b>	<b>9.998</b>	<b>4,2</b>	<b>13.140</b>	<b>6,4</b>	<b>12.128</b>	<b>5,0</b>	<b>22.095</b>	<b>6,2</b>	<b>27.468</b>	<b>6,6</b>	<b>38.594</b>	<b>9,4</b>
* RUSYA FED. / Russian Fed.	845	0,4	620	0,3	290	0,1	101	0,0	10	0,0	0	0,0
* ROMANYA / Romania	3.688	1,6	5.152	2,5	5.873	2,4	13.230	3,7	17.937	4,3	27.666	6,8
* ÇEK CUM. / Czech Republic	5.465	2,3	3.625	1,8	3.401	1,4	6.332	1,8	7.589	1,8	10.118	2,5
* DİĞER / Others	0	0,0	3.743	1,8	2.564	1,1	2.432	0,7	1.932	0,5	810	0,2
<b>UZAK DOĞU / Far East</b>	<b>31.366</b>	<b>13,2</b>	<b>28.218</b>	<b>13,6</b>	<b>40.495</b>	<b>16,6</b>	<b>36.135</b>	<b>10,2</b>	<b>35.496</b>	<b>8,6</b>	<b>43.691</b>	<b>10,7</b>
* JAPONYA / Japan	8.931	3,8	7.177	3,5	6.203	2,5	5.668	1,6	4.100	1,0	3.230	0,8
* G. KORE / S. Korea	20.102	8,5	18.005	8,7	31.198	12,8	26.466	7,5	27.752	6,7	37.957	9,3
* DİĞER / Others	2.333	1,0	3.036	1,5	3.094	1,3	4.001	1,1	3.644	0,9	2.504	0,6
<b>TOPLAM/Total</b>	<b>236.725</b>	<b>100,0</b>	<b>206.793</b>	<b>100,0</b>	<b>243.542</b>	<b>100,0</b>	<b>354.150</b>	<b>100,0</b>	<b>414.031</b>	<b>100,0</b>	<b>409.676</b>	<b>100,0</b>

Kaynak: Otomotiv Distribütörleri Derneği

Source: Association of Automotive Distributors

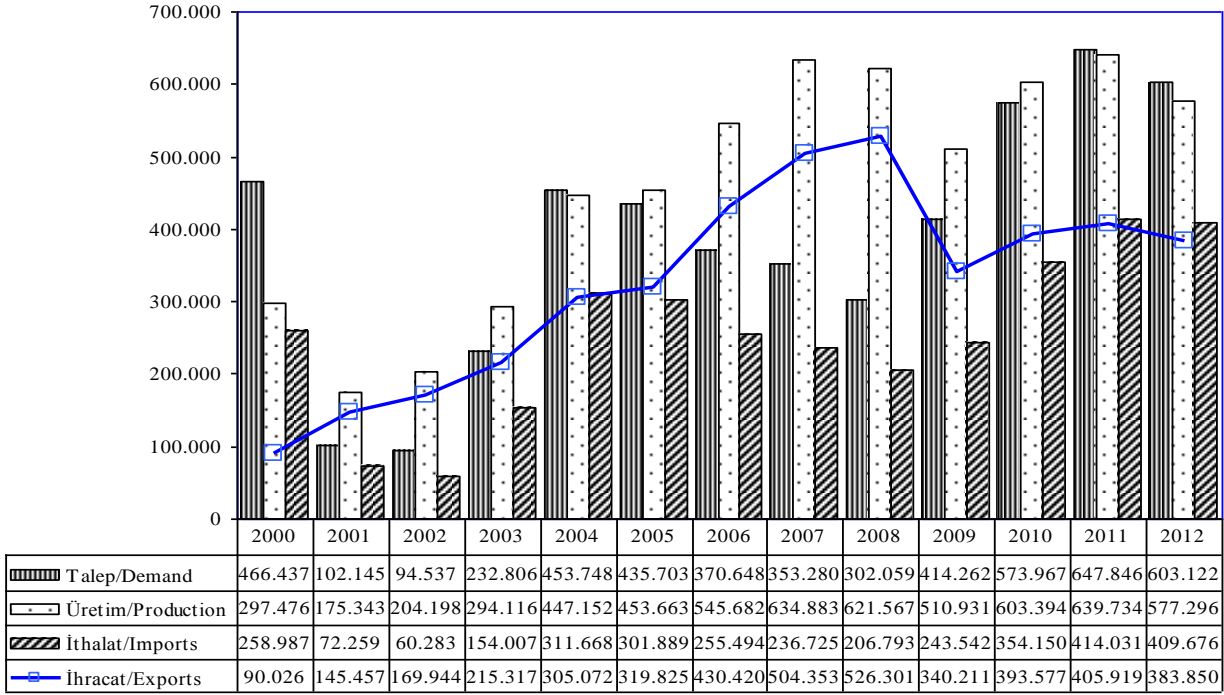
## HAFİF TİCARİ ARAÇ İTHALATI / Light Commercial Vehicle Imports

BÖLGE / ÜLKE Region / Country	2007		2008		2009		2010		2011		2012	
	Adet / Unit	%	Adet / Unit	%	Adet / Unit	%	Adet / Unit	%	Adet / Unit	%	Adet / Unit	%
<b>AT + EFTA / EU + EFTA</b>	<b>73.753</b>	<b>68,1</b>	<b>57.527</b>	<b>63,2</b>	<b>43.681</b>	<b>66,3</b>	<b>75.496</b>	<b>74,4</b>	<b>88.136</b>	<b>78,5</b>	<b>75.279</b>	<b>81,8</b>
<b>DOĞU AVRUPA / East Europe</b>	<b>5.263</b>	<b>4,9</b>	<b>4.463</b>	<b>4,9</b>	<b>4.113</b>	<b>6,2</b>	<b>6.268</b>	<b>6,2</b>	<b>3.516</b>	<b>3,1</b>	<b>1.298</b>	<b>1,4</b>
* RUSYA FED. / Russian Fed.	0	0,0	0	0,0	0	0,0	0	0,0	0	0,0	0	0,0
* ROMANYA / Romania	5.263	4,9	4.426	4,9	3.918	5,9	5.938	5,9	3.403	3,0	1.298	1,4
* ÇEK CUM. / Czech Republic	0	0,0	37	0,0	2	0,0	0	0,0	0	0,0	0	0,0
* DİĞER / Others	0	0,0	0	0,0	193	0,3	330	0,3	113	0,1	0	0,0
<b>UZAK DOĞU / Far East</b>	<b>29.269</b>	<b>27,0</b>	<b>29.054</b>	<b>31,9</b>	<b>18.096</b>	<b>27,5</b>	<b>19.645</b>	<b>19,4</b>	<b>20.682</b>	<b>18,4</b>	<b>15.505</b>	<b>16,8</b>
* JAPONYA / Japan	13.578	12,5	13.334	14,6	7.813	11,9	10.073	9,9	10.261	9,1	9.045	9,8
* G. KORE / S. Korea	10.205	9,4	9.403	10,3	5.121	7,8	4.146	4,1	4.352	3,9	4.442	4,8
* DİĞER / Others	5.486	5,1	6.317	6,9	5.162	7,8	5.426	5,4	6.069	5,4	2.018	2,2
<b>TOPLAM/Total</b>	<b>108.285</b>	<b>100,0</b>	<b>91.044</b>	<b>100,0</b>	<b>65.890</b>	<b>100,0</b>	<b>101.409</b>	<b>100,0</b>	<b>112.334</b>	<b>100,0</b>	<b>92.082</b>	<b>100,0</b>

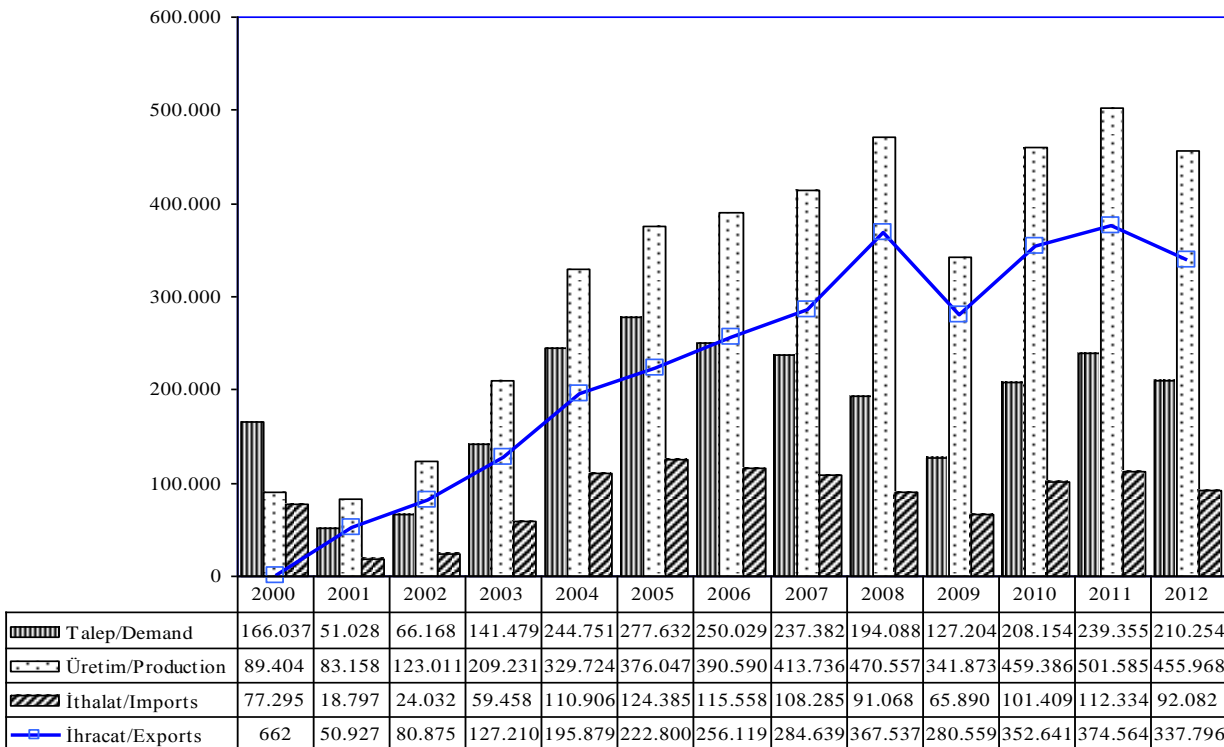
Kaynak: Otomotiv Distribütörleri Derneği

Source: Association of Automotive Distributors

## Otomobil Üretim/İthalat/İhracat P.Cars Production/Imports/Exports



## Hafif Ticari Araçlar Üretim/İthalat/İhracat Light Commercial Vehicles Production/Imports/Exports



**OTOMOTİV SANAYİİ İSTİHDAMI**  
**Automotive Industry Employment**

<b><u>FİRMALAR / Firms</u></b>	<b><u>2008</u></b>	<b><u>2009</u></b>	<b><u>2010</u></b>	<b><u>2011</u></b>	<b><u>2012</u></b>
<b>A.I.O.S.</b>					
İŞÇİ / Worker	574	520	316	342	422
BÜRO PERSONELİ / Employee	132	95	94	94	107
İDARECİ / Administrator	15	14	14	16	18
MÜHENDİS / Engineer	55	48	45	44	52
İDA. MÜHENDİS / Ad. Eng.	27	24	21	24	23
<b>TOPLAM / Total</b>	<b>803</b>	<b>701</b>	<b>490</b>	<b>520</b>	<b>622</b>
<b>B.M.C.</b>					
İŞÇİ / Worker	2377	2168	2040	1925	1701
BÜRO PERSONELİ / Employee	338	309	301	293	303
İDARECİ / Administrator	34	29	32	32	30
MÜHENDİS / Engineer	183	167	153	148	71
İDA. MÜHENDİS / Ad. Eng.	75	71	70	75	64
<b>TOPLAM / Total</b>	<b>3.007</b>	<b>2.744</b>	<b>2.596</b>	<b>2.473</b>	<b>2.169</b>
<b>FORD OTOSAN</b>					
İŞÇİ / Worker	6657	6197	6635	7414	7069
BÜRO PERSONELİ / Employee	385	378	417	834	517
İDARECİ / Administrator	82	73	66	107	122
MÜHENDİS / Engineer	757	647	961	829	1417
İDA. MÜHENDİS / Ad. Eng.	283	297	334	397	402
<b>TOPLAM / Total</b>	<b>8.164</b>	<b>7.592</b>	<b>8.413</b>	<b>9.581</b>	<b>9.527</b>
<b>HATTAT TARIM</b>					
İŞÇİ / Worker	37	47	107	175	113
BÜRO PERSONELİ / Employee	68	23	21	52	38
İDARECİ / Administrator	13	15	12	2	10
MÜHENDİS / Engineer	15	2	5	21	11
İDA. MÜHENDİS / Ad. Eng.	6	4	17	6	12
<b>TOPLAM / Total</b>	<b>139</b>	<b>91</b>	<b>162</b>	<b>256</b>	<b>184</b>



<b><u>FİRMALAR / Firms</u></b>	<b><u>2008</u></b>	<b><u>2009</u></b>	<b><u>2010</u></b>	<b><u>2011</u></b>	<b><u>2012</u></b>
<b>HONDA TÜRKİYE</b>					
İŞÇİ / Worker	953	545	529	614	499
BÜRO PERSONELİ / Employee	180	223	201	216	183
İDARECİ / Administrator	81	22	18	19	22
MÜHENDİS / Engineer	58	26	58	61	59
İDA. MÜHENDİS / Ad. Eng.	17	22	7	12	14
<b>TOPLAM / Total</b>	<b>1.289</b>	<b>838</b>	<b>813</b>	<b>922</b>	<b>777</b>
<b>HYUNDAI ASSAN</b>					
İŞÇİ / Worker	1692	1349	1261	1356	1256
BÜRO PERSONELİ / Employee	85	26	90	155	161
İDARECİ / Administrator	151	102	81	37	45
MÜHENDİS / Engineer	127	118	100	93	95
İDA. MÜHENDİS / Ad. Eng.	14	14	38	38	43
<b>TOPLAM / Total</b>	<b>2.069</b>	<b>1.609</b>	<b>1.570</b>	<b>1.679</b>	<b>1.600</b>
<b>KARSAN</b>					
İŞÇİ / Worker	727	617	878	812	1047
BÜRO PERSONELİ / Employee	36	36	34	38	40
İDARECİ / Administrator	5	2	4	3	4
MÜHENDİS / Engineer	68	60	75	85	105
İDA. MÜHENDİS / Ad. Eng.	12	10	15	12	12
<b>TOPLAM / Total</b>	<b>848</b>	<b>725</b>	<b>1.006</b>	<b>950</b>	<b>1.208</b>
<b>M.A.N. TÜRKİYE</b>					
İŞÇİ / Worker	1677	1177	1129	1327	1258
BÜRO PERSONELİ / Employee	136	106	90	103	81
İDARECİ / Administrator	32	25	25	28	23
MÜHENDİS / Engineer	77	60	73	93	91
İDA. MÜHENDİS / Ad. Eng.	45	38	36	50	54
<b>TOPLAM / Total</b>	<b>1.967</b>	<b>1.406</b>	<b>1.353</b>	<b>1.601</b>	<b>1.507</b>

<b><u>FİRMALAR / Firms</u></b>	<b><u>2008</u></b>	<b><u>2009</u></b>	<b><u>2010</u></b>	<b><u>2011</u></b>	<b><u>2012</u></b>
<b>M. BENZ TÜRK</b>					
İŞÇİ / Worker	3673	2915	3197	3564	3678
BÜRO PERSONELİ / Employee	351	339	512	572	450
İDARECİ / Administrator	106	108	68	101	296
MÜHENDİS / Engineer	445	553	428	482	418
İDA. MÜHENDİS / Ad. Eng.	75	82	182	188	188
<b>TOPLAM / Total</b>	<b>4.650</b>	<b>3.997</b>	<b>4.387</b>	<b>4.907</b>	<b>5.030</b>
<b>OTOKAR</b>					
İŞÇİ / Worker	779	750	851	984	1686
BÜRO PERSONELİ / Employee	172	182	198	217	249
İDARECİ / Administrator	26	29	30	39	42
MÜHENDİS / Engineer	130	154	141	179	201
İDA. MÜHENDİS / Ad. Eng.	77	91	92	100	103
<b>TOPLAM / Total</b>	<b>1.184</b>	<b>1.206</b>	<b>1.312</b>	<b>1.519</b>	<b>2.281</b>
<b>OYAK RENAULT</b>					
İŞÇİ / Worker	4963	4678	4557	4813	4884
BÜRO PERSONELİ / Employee	591	578	564	594	603
İDARECİ / Administrator	34	26	24	32	35
MÜHENDİS / Engineer	579	524	553	562	535
İDA. MÜHENDİS / Ad. Eng.	109	108	112	115	142
<b>TOPLAM / Total</b>	<b>6.276</b>	<b>5.914</b>	<b>5.810</b>	<b>6.116</b>	<b>6.199</b>
<b>TEMSA GLOBAL</b>					
İŞÇİ / Worker	1380	1129	1002	1082	1093
BÜRO PERSONELİ / Employee	378	289	218	245	247
İDARECİ / Administrator	42	32	28	26	31
MÜHENDİS / Engineer	278	246	120	152	150
İDA. MÜHENDİS / Ad. Eng.	77	68	84	88	100
<b>TOPLAM / Total</b>	<b>2.155</b>	<b>1.764</b>	<b>1.452</b>	<b>1.593</b>	<b>1.621</b>

<b><u>FİRMALAR / Firms</u></b>	<b><u>2008</u></b>	<b><u>2009</u></b>	<b><u>2010</u></b>	<b><u>2011</u></b>	<b><u>2012</u></b>
<b>TOFAŞ</b>					
İŞÇİ / Worker	6814	5734	5782	6471	5967
BÜRO PERSONELİ / Employee	490	429	400	489	483
İDARECİ / Administrator	64	51	59	58	55
MÜHENDİS / Engineer	546	504	494	562	561
İDA. MÜHENDİS / Ad. Eng.	137	139	142	145	148
<b>TOPLAM / Total</b>	<b>8.051</b>	<b>6.857</b>	<b>6.877</b>	<b>7.725</b>	<b>7.214</b>
<b>TOYOTA</b>					
İŞÇİ / Worker	2728	2557	2472	2294	2063
BÜRO PERSONELİ / Employee	152	139	130	115	117
İDARECİ / Administrator	9	8	8	8	8
MÜHENDİS / Engineer	149	130	114	91	94
İDA. MÜHENDİS / Ad. Eng.	39	60	56	55	56
<b>TOPLAM / Total</b>	<b>3.077</b>	<b>2.894</b>	<b>2.780</b>	<b>2.563</b>	<b>2.338</b>
<b>TÜRK TRAKTÖR</b>					
İŞÇİ / Worker	1118	938	1464	2101	1945
BÜRO PERSONELİ / Employee	191	146	243	233	256
İDARECİ / Administrator	7	7	7	38	35
MÜHENDİS / Engineer	129	124	73	78	98
İDA. MÜHENDİS / Ad. Eng.	29	31	30	41	44
<b>TOPLAM / Total</b>	<b>1.474</b>	<b>1.246</b>	<b>1.817</b>	<b>2.491</b>	<b>2.378</b>
<b>GENEL TOPLAM/Grand Total</b>					
İŞÇİ / Worker	<b>36.149</b>	<b>31.321</b>	<b>32.220</b>	<b>35.274</b>	<b>34.681</b>
BÜRO PERSONELİ / Employee	<b>3.685</b>	<b>3.298</b>	<b>3.513</b>	<b>4.250</b>	<b>3.835</b>
İDARECİ / Administrator	<b>701</b>	<b>543</b>	<b>476</b>	<b>546</b>	<b>776</b>
MÜHENDİS / Engineer	<b>3.596</b>	<b>3.363</b>	<b>3.393</b>	<b>3.480</b>	<b>3.958</b>
İDA. MÜHENDİS / Ad. Eng.	<b>1.022</b>	<b>1.059</b>	<b>1.236</b>	<b>1.346</b>	<b>1.405</b>
<b>TOPLAM / Total</b>	<b>45.153</b>	<b>39.584</b>	<b>40.838</b>	<b>44.896</b>	<b>44.655</b>

**İDA. MÜHENDİS=İDARECİ MÜHENDİS**  
**Ad. Eng.=Administrator Engineer**

**OTOMOTİV SANAYİ YATIRIMLARI (USD)**  
**Realized Sectorial Investments (USD)**

ARALIK SONU/By the end of December

<b>PROJE TİPİ</b> Projects	<b>2008</b>	<b>2009</b>	<b>2010</b>	<b>2011</b>	<b>2012</b>
<b>KAPASİTE ARTTIRIMI</b> Capacity Development	189.000.000	20.000.000	40.000.000	44.000.000	130.000.000
<b>MODERNİZASYON</b> Modernization	66.000.000	83.000.000	50.000.000	61.000.000	113.000.000
<b>YENİ MODEL</b> New Model Development	725.000.000	401.000.000	366.000.000	430.000.000	723.000.000
<b>KALİTE ARTTIRICI</b> Quality Development	33.000.000	11.000.000	12.000.000	16.000.000	46.000.000
<b>YERLİLEŞTİRMEYİ ARTTIRICI</b> Localization	97.000.000	87.000.000	11.000.000	70.000.000	23.000.000
<b>DİĞER</b> Others	198.000.000	70.000.000	72.000.000	125.000.000	80.000.000
<b>TOPLAM</b> Toplam	<b>1.308.000.000</b>	<b>672.000.000</b>	<b>551.000.000</b>	<b>746.000.000</b>	<b>1.115.000.000</b>

**TÜRKİYE ARAÇ PARKI**  
**Automotive Vehicles Park In Turkey**

YILLAR Years	OTOMOBİL P.Car	KAMYON Truck	KAMYONET Pick-Up	İNİBÜS Minibus	OTOBÜS Bus	TRAKTÖR F.Tractor	TOPLAM Total
1963	72.034	49.356	30.739	7.543	11.726	50.844	222.242
1964	79.449	46.721	28.658	9.196	11.216	51.781	227.021
1965	87.584	49.317	29.804	10.476	11.693	54.608	243.482
1966	91.469	47.931	31.462	11.239	12.041	65.108	259.250
1967	112.867	56.889	39.927	16.008	13.332	74.982	314.005
1968	125.375	62.616	43.441	18.967	13.948	84.874	349.221
1969	137.345	69.478	48.655	20.540	15.520	96.407	387.945
1970	137.771	70.770	52.152	20.916	15.980	105.865	403.454
1971	153.676	73.433	57.011	22.380	17.040	118.525	442.065
1972	187.272	78.920	62.796	25.559	18.504	135.726	508.777
1973	240.360	86.780	71.043	30.055	20.011	156.139	604.388
1974	313.160	95.309	81.025	34.122	21.404	200.466	745.486
1975	403.546	108.381	98.579	40.623	23.763	243.066	917.958
1976	488.894	122.176	116.861	46.066	25.388	281.802	1.081.187
1977	560.424	138.093	134.213	51.999	27.096	320.578	1.232.403
1978	624.438	146.551	144.695	56.836	28.559	370.259	1.371.338
1979	688.687	157.095	155.278	61.596	30.634	402.777	1.496.067
1980	742.252	164.893	165.821	64.707	32.783	436.369	1.606.825
1981	776.432	172.372	172.269	66.514	33.839	458.714	1.680.140
1982	811.465	180.772	178.762	69.598	35.432	491.001	1.767.030
1983	856.350	190.277	186.427	73.585	38.478	513.516	1.858.633
1984	919.577	197.721	198.106	80.697	43.638	556.781	1.996.520
1985	983.444	205.496	212.505	87.951	47.119	583.974	2.120.489
1986	1.087.234	217.111	224.755	97.917	50.798	612.731	2.290.546
1987	1.193.021	225.872	233.480	106.314	53.554	637.449	2.449.690
1988	1.310.257	234.166	240.718	112.885	56.172	654.636	2.608.834
1989	1.434.830	241.392	248.567	118.026	58.859	672.845	2.774.519
1990	1.649.879	257.353	263.407	125.399	63.700	692.454	3.052.192
1991	1.864.344	273.409	280.891	133.632	68.973	704.373	3.325.622
1992	2.181.388	379.410	308.180	145.312	75.592	828.580	3.918.462
1993	2.619.852	406.398	354.290	159.900	84.254	870.559	4.495.253
1994	2.861.640	419.374	374.473	166.424	87.545	895.506	4.804.962
1995	3.058.511	432.216	397.743	173.051	90.197	937.528	5.089.246
1996	3.274.156	453.796	442.788	182.694	94.978	988.142	5.436.554
1997	3.570.105	489.071	529.838	197.057	101.896	1.053.381	5.941.348
1998	3.838.631	519.749	626.004	211.495	108.361	1.107.157	6.411.397
1999	4.072.326	531.690	692.935	221.683	112.186	1.131.626	6.762.446
2000	4.422.180	557.295	794.459	235.885	118.454	1.159.070	7.287.343
2001	4.534.803	562.063	833.175	239.381	119.306	1.179.068	7.467.796
2002	4.600.140	567.152	875.381	241.700	120.097	1.180.127	7.584.597
2003	4.700.343	579.010	973.457	245.394	123.500	1.184.256	7.805.960
2004	5.400.440	647.420	1.259.867	318.954	152.712	1.210.283	8.989.676
2005	5.772.745	676.929	1.475.057	338.539	163.390	1.247.767	9.674.427
2006	6.140.992	709.535	1.695.624	357.523	175.949	1.290.679	10.370.302
2007	6.472.156	729.202	1.890.459	372.601	189.128	1.327.334	10.980.880
2008	6.796.629	744.217	2.066.007	383.548	199.934	1.358.577	11.548.912
2009	7.093.964	727.302	2.204.951	384.053	201.033	1.368.032	11.979.335
2010	7.544.871	726.359	2.399.038	386.973	208.510	1.404.872	12.670.623
2011	8.113.111	728.458	2.611.104	389.435	219.906	1.466.208	13.528.222
2012	8.648.875	751.650	2.794.606	396.119	235.949	1.515.421	14.342.620

KAYNAK: T.C. BAŞBAKANLIK TÜRKİYE İSTATİSTİK KURUMU

Source: Republic Of Turkey, Prime Ministry Turkish Statistical Institute